



Report (fictive)

Overall Rating



As of 2010-01-31

Out of  
World Stock Funds

Rating derived from a weighted average of the fund's 3, 5, 10-year rating which are based on risk-adjusted performance.

Style Box



Value Blend Growth

As of 2009-12-31

Day Change

-

NAV (2010-02-17)

\$ -

YTD Return % (2010-02-17)

-

Total Assets (\$ mil)

278.8

Covalence Ethical Grade

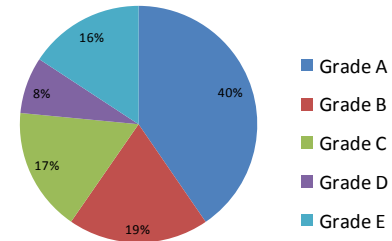
Nb and % of screened stock

Fund holdings by ethical grades (227 stocks;75%)  
Securities' Ethical grades by criteria groups

**B<sub>b</sub>**



Screened/portfolio:  
227/602  
75 % of fund value

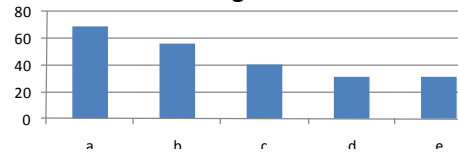


Top 10 Holdings

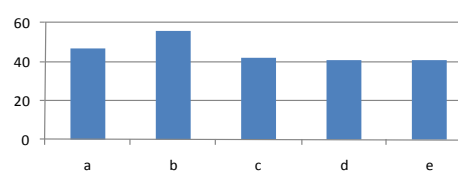
	% of total funds	Grade
ExxonMobil Corporation	4.83	E
Microsoft Corporation	3.06	A
Procter & Gamble Company	2.34	A
Apple, Inc.	2.32	B
Johnson & Johnson	2.25	A
IBM Corp	2.20	A
J.P. Morgan Chase & Co.	2.17	C
Chevron Corporation	2.12	E
AT&T, Inc.	2.09	A
General Electric Company	2.08	A

Sectors	% of portfolio	Grade
Financial Services	14.56	B
Consumer Goods	12.24	A
Hardware	12.10	A
Energy	11.52	E
Industrial Materials	10.75	B
Health Care	10.16	B
Consumer Services	9.71	B
Telecommunications	6.10	A
Software	4.31	A
Utilities	3.11	B
Business Services	2.66	C

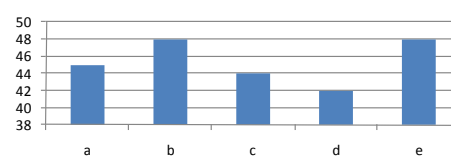
I. Working conditions



II. Production



III. Products



IV. Institutions

